

Satellit - Dry version

Data sheet

FGFA1703 - FGFA2703



Technical Department

Tél. : +33 (0) 160 215 125
Fax : +33 (0) 160 215 128
E-mail : technique@cordia.fr

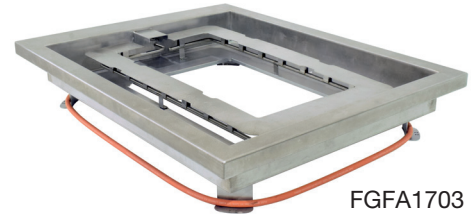
Sales Department

Tel: +33 (0) 160 215 130
Fax: +33 (0) 160 215 139
E-mail: contact@cordia-fire-safety.com

www.myfiresafetyproducts.com



FGFA2703



FGFA1703

- Ecological flame generator.
- Eco-design:
very low electricity consumption.
- Smartway compatible.



Smartway
compatible

Satellit is a range of revolutionary fire generators incorporating all the best technologies. Radio remote control, automatic gas cut-off, very robust materials and very long life - it's all included.

Furthermore, it is Smartway compatible. Which means it can be controlled from the training tablet. Extremely practical if you conduct sessions using several training devices.

Applications

Fire fighting training in industry.

Télécommande bouton unique



Associated products

- Modules (compatible modules can be consulted in the user guide).
- Training tablet (FTAF0001).
- Heat-proof gloves (IGAC0001).
- Serfeu (FSER0080).

Patent filed.
Satellit is a registered trademark.



Satellit - Dry version

Data sheet

FGFA1703 - FGFA2703

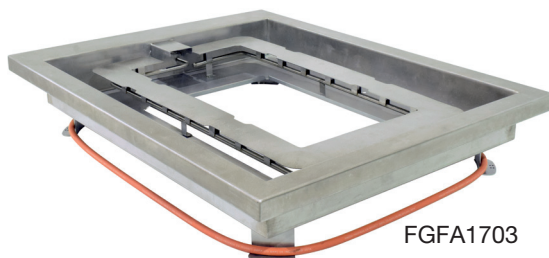
Technical Department

Tél. : +33 (0) 160 215 125
Fax : +33 (0) 160 215 128
E-mail : technique@cordia.fr

Sales Department

Tel: +33 (0) 160 215 130
Fax: +33 (0) 160 215 139
E-mail: contact@cordia-fire-safety.com

www.myfiresafetyproducts.com



FGFA1703



FGFA2703

Technical characteristics

Model	Dry version
Control	Two-way radio 433 MHz
Communication protocol	Smartway
Solenoid valve	3/8"
Tray material	Stainless steel
Gas pipe material	Stainless steel
Electric box battery	3 alkaline batteries D size 1.5 V, APIA1520
Remote control battery	1 alkaline battery AA size 1.5 V, APIA1506

Part number	FGFA1703	FGFA2703
Size	Large	Compact
Gas supply	Propane 13/35 kg with/without flow regulator	Propane 6/13 kg with/without flow regulator
Recommended extinguishing agents	Water / Water with foam additives / CO2 / Powder	Water / Water with foam additives / CO2
Compatible modules	-	2
Weight	20 kg	11 kg
Dimensions	W.1050 x H.220 x D.800 mm	W.550 x H.220 x D.500 mm

Patent filed.

Satellit is a registered trademark.

As the information in this document may be altered without notice, the company is not bound by it in the absence of confirmation.

